

MARLIN TOWER

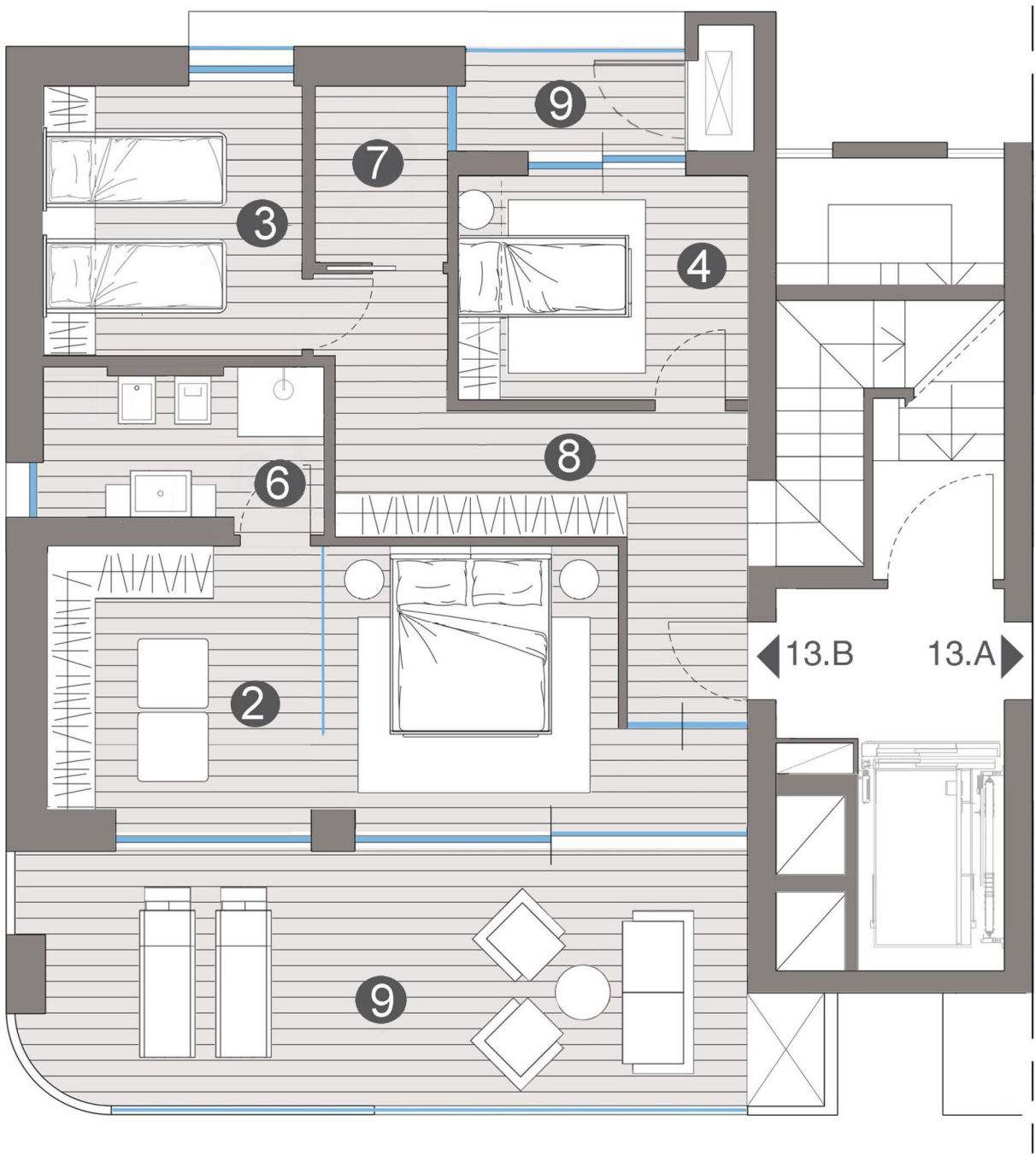
Via Don Guerrino Bertolin 25/a Jesolo Lido

Pianta Attico / *Penthouse Plan*

appartamento

piano	tredicesimo / quattordicesimo
Mq. lordi	167.25
Mq. terrazze	137.85

- 1 soggiorno-cucina/ *living room-kitchen*
- 2 camera / *bedroom*
- 3 camera / *bedroom*
- 4 camera / *bedroom*
- 5 camera / *bedroom*
- 6 bagno / *bathroom*
- 7 lavanderia / *laundry*
- 8 disimpegno / *hallway*
- 9 terrazza / *terrace*



13.B →

